

RESISTIVITY METER - SERIES 319 ML-DB -

- 2 independent measuring inputs
- For coefficient probe C= 0.1
- Wall mounting enclosure IP 55

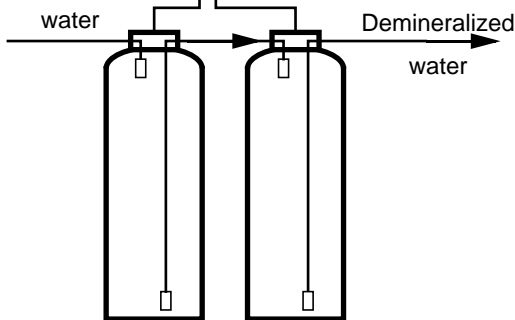


SYSTEM 1

- Resistivity meter blind
- Adjustable alarm with internal potentiometer
- Volt free change-over output relay

SYSTEM 2

- Resistivity meter with LCD display
- Analog 4 - 20 mA linear output
- Scale 0-20 M Ohm standard



DESCRIPTION

BAMO developed the resistivity meter 319 ML / DB to control and supervise two bottles of resins meadow to mixed bed climbings in series.

SYSTEM 1: Controls the first bottle in blind mode.

As soon as the resistivity is inferior to the preset value adjusted with the internal potentiometer than relay 1 switches (preset manufacture value = 500KΩ). The change-over relay S1 changes state, meaning for the user that the first bottle is exhausted and that it would be desirable to change it before the second bottle (that functions again) is exhausted.

SYSTEM 2: Controls bottle two in the same manner but to an other meadow value-ruled by the user (Threshold and relay S2).

Furthermore, the resistivity at the output of the second bottle is permanent displayed.

The 4-20 mA output signal allows to record and report the second system from a distance and gives an impression of the water quality at the output of the two bottles.

TECHNICAL SPECIFICATIONS

Power	: 230 VAC/ 50 Hz
Power consumption	: 5 VA
Measuring scales	: 0-20 MΩ on system 2 (others on request) 2 MΩ on system 1
Precision	: ±1%
Preset system 1	: With Internal potentiometer
Preset system 2	: With external potentiometer and push-button, value displayed on the LCD display
Relay	: 2 contacts Volt free change-over PC 3 A/ 250 V/ 500 VA
Analog output	: 2-wire 4-20 mA (not galvanic isolated)
Housing	: Wall mounting IP 55 with transparent lid
Connection	: Screw terminals with separated power connections. Outputs with PE cable gland
Probes	: Coefficient C= 0.1.



BAMO MESURES

13, rue Pasteur - 95100 ARGENTEUIL - FRANCE
Tél : (+33) 01 30 25 83 20 - E-mail : info@bamo.fr
Fax : (+33) 01 34 10 16 05 - Site : <http://www.bamo.fr>

15/07/99

RESISTIVITY METER
- SERIES 319 ML DB

319 I1 01 A1

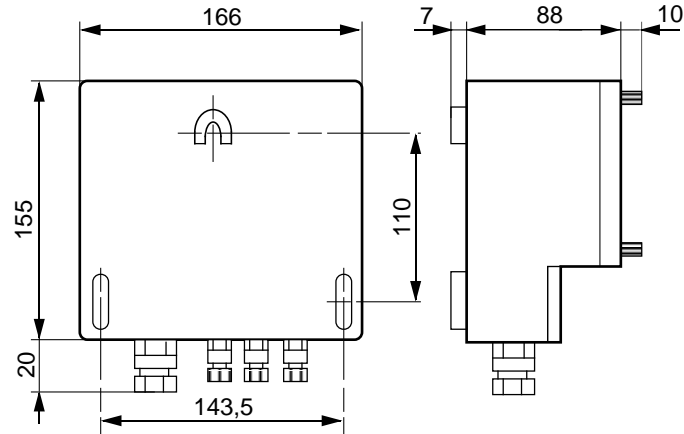
DOC

319/1

REFERENCE AND ARTICLE CODES

319100 Resistivity meter 319 ML/ DB

DIMENSIONS



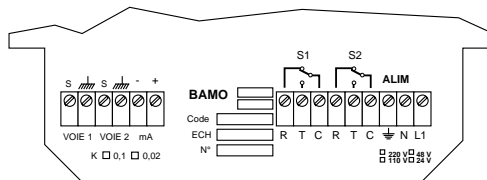
CONNECTIONS

The green LED in the front indicates that the output relay is in rest position.

2 independent high or low alarm thresholds are presetable with the switches located at the front.

The analog output is proportional to the beach of measure of second bottle

(0 or 4-20 mA for 0 to 100% of the scale). The output can be programmed with dip-switches located behind the front as 0-20 or 4-20 mA.



CALIBRATION

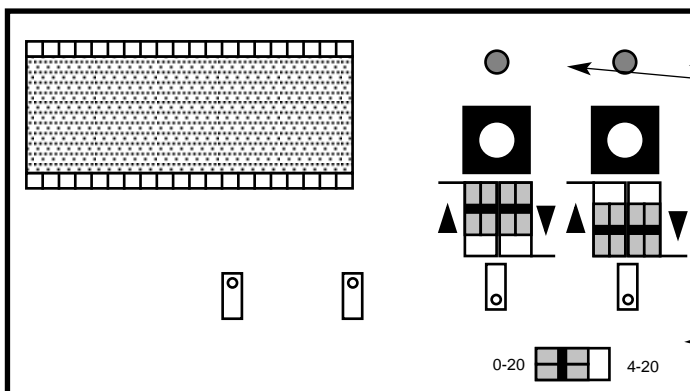
The resistivity meters are delivered factory calibrated according to the characteristics required with the order.

In case of scale modification on the analog output return the unit to the factory.

Our technical service is at your disposition for all complementary information.

FRONT PCB INFORMATION

The potentiometers and dip-switches are located behind the front. Remove the four screws in the front to access the PCB.



Set status.
Green : Ok
Red : Default

Calibration set S2

Change output signal
4/20 mA or 0/20 mA

BAMO MESURES

13, rue Pasteur - 95100 ARGENTEUIL - FRANCE
Tél : (+33) 01 30 25 83 20 - E-mail : info@bamo.fr
Fax : (+33) 01 34 10 16 05 - Site : http://www.bamo.fr

15/01/99

RESISTIVITY METER
- SERIES 319 ML DB

319 11 01 AI

DOC

319/2